

ThorPlas-Blue Split Spherical Bearing

Thordon knows rudder and steering gear bearings!

With over 40,000 vessel years of experience over the past 35 years, a Thordon solution has been developed for the live end of a hydraulic steering system. The ThorPlas-Blue Split Spherical Bearing (SSB) solves the problem of less than desirable alignment tolerances in the hydraulic steering system design.

As most bearings in the steering system are greased sleeve type bushings, there is no allowance for vertical movement of the tiller pins. The ThorPlas-Blue SSB allows the bearing to tolerate small angular misalignment resulting from deflection or improper mounting.

However, misalignment is not the only stress input on this type of product: vibration, corrosion, and pollution are also very damaging factors to the steering system. The ThorPlas-Blue SSB can handle them all!



Benefits

- Operates without grease
- Installation and bearing exchange is quick and easy
- Rudders operate without any binding
- Reduces piston and cylinder damage
- Operate under high loads of pressures to 45 MPa
- Eliminates grease on deck and oily run off into waterways

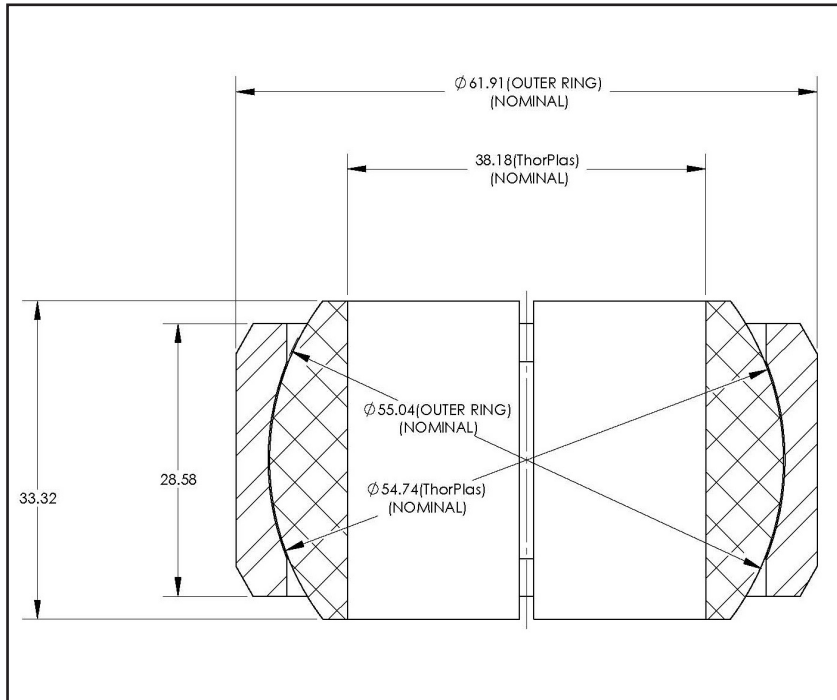


About ThorPlas-Blue

ThorPlas-Blue is a homogeneous, self-lubricating polymer material with low dry coefficient of friction, high strength and low creep. ThorPlas-Blue bearings are tough and reliable and fit into virtually all applications where greased bronze is used.

THORDON
THORDON BEARINGS INC.

ThorPlas-Blue Split Spherical Bearing



The ThorPlas-Blue SSB and hard coating pin system can be ordered in 4 standard pin sizes of 38.1 mm, 50.8 mm, 63.5 mm and 76.2 mm, as well as in custom sizes.

4 STANDARD PIN SIZES:

SHAFT DIA.: = 38.1 +0/-0.05 mm
 HOUSING DIA.: = 61.88 +0/-0.03 mm
 MAX DESIGN TEMP.: = 70°C
 MAX OPERATING LOAD: = 4,600 kg
 MAX STATIC LOAD: = 6,700 kg

SHAFT DIA.: = 63.5 +0/-0.05 mm
 HOUSING DIA.: = 99.97 +0/-0.04 mm
 MAX DESIGN TEMP.: 70°C
 MAX OPERATING LOAD: = 15,100 kg
 MAX STATIC LOAD: = 22,000 kg

SHAFT DIA.: = 50.8 +0/-0.05 mm
 HOUSING DIA.: = 80.92 +0/-0.04 mm
 MAX DESIGN TEMP.: = 70°C
 MAX OPERATING LOAD: = 9,100 kg
 MAX STATIC LOAD: = 13,200 kg

SHAFT DIA.: = 76.2 +0/-0.05 mm
 HOUSING DIA.: = 120.6 +0/-0.04 mm
 MAX DESIGN TEMP.: = 70°C
 MAX OPERATING LOAD: = 22,600 kg
 MAX STATIC LOAD: = 32,700 kg

Thordon Bearings Inc. designs and manufactures a complete range of environmentally friendly propeller shaft, rudder, deck equipment, and shaft seals for the global marine market. Recognized internationally for superior performance in marine applications, Thordon Bearings has a worldwide customer service network in over 100 countries.

THORDON

A Thomson-Gordon Group Company - Innovating since 1911

3225 Mainway, Burlington, Ontario L7M 1A6 Canada Tel: +1.905.335.1440 Fax: +1.905.335.4033

TPSSB-M 11/2014