

# S TYPE - ADJUSTING STUD ENGINE AND MACHINERY

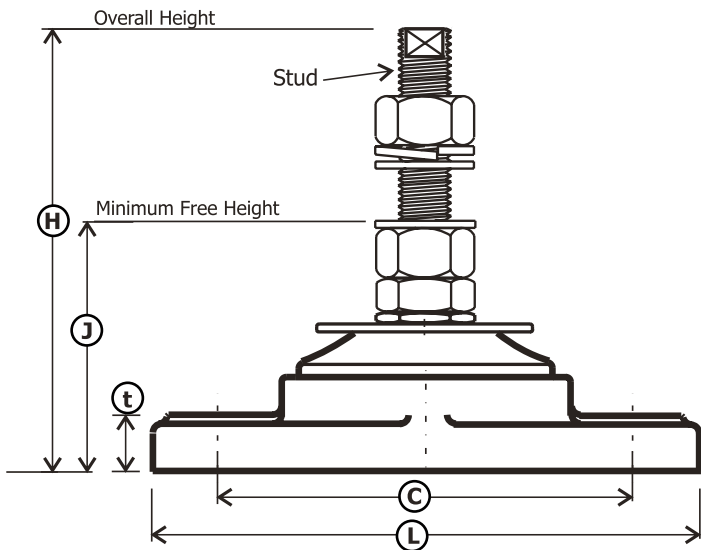
## Single and Double Core Mounts

### Metric

MOUNT MODEL	RECOMMENDED WORKING LOAD PER MOUNT	BASE FOOT-PRINT L x W	BASE BOLT CENTERS C	BASE BOLT DIA D	BASE THICKNESS T	STUD DIA S	MIN FREE HEIGHT J	OVERALL HEIGHT H	WEIGHT
	kg	mm	mm	mm	mm	mm	mm	mm	kg
M30-12S	20-75	105 x 64	75-76.2	8	13	12	64	100	0.5
MY30-16S	25-100	220 x 74	174	10	20	16	103	155	1.2
M55-12S	25-200	134 x 75	100-105	10	18	12	65	103	0.6
M55-16S	25-200	134 x 75	100-105	10	18	16	73	127	0.9
M75-16S	75-300	177 x 98	127	12	20	16	86	140	1.2
M75-20S	75-300	177 x 98	127	12	20	20	91	159	1.3
M85-16S	75-300	190 x 98	140	12	20	16	86	140	1.2
M85-20S	75-300	190 x 98	140	12	20	20	91	159	1.3
M90-20S	75-350	177 x 100	127	12	20	20	104	173	1.4
M90-24S	75-350	177 x 100	127	12	20	24	108	196	1.5
M100-20S	75-350	188 x 100	140	12	20	20	104	173	1.6
M100-24S	75-350	188 x 100	140	12	20	24	108	196	2.0
M110-20S	75-350	220 x 107	170	12	25	20	122	191	2.0
M110-24S	75-350	220 x 107	170	12	25	24	128	214	2.4
M125HD-20S	250-750	240 x 127	170	16	25	20	128	196	2.4
M125HD-24S	250-750	240 x 127	170	16	25	24	134	219	3.2
M125XHD-24S	500-1200	240 x 127	170	16	25	24	134	219	3.2
M127HD-20S	250-750	240 x 127	182	16	25	20	128	173	2.4
M127HD-24S	250-750	240 x 127	182	16	25	24	134	219	3.2
M127XHD-24S	500-1200	240 x 127	182	16	25	24	134	219	3.2
M130HD-20S	250-750	240 x 127	182	16	25	20	104	173	2.4
M130HD-24S	250-750	240 x 127	182	16	25	24	110	196	2.9
M130XHD-24S	500-1200	240 x 127	182	16	25	24	110	196	2.9
M130LPHD-24S	250-750	240 x 127	182	16	25	24	96	194	2.9
M130LPXHD-24S	500-1200	240 x 127	182	16	25	24	96	194	2.9
M135HD-24S	600-1600	240 x 145	182	16	25	24	134	219	3.8
M140HD-24S	600-1600	240 x 145	182	16	25	24	110	196	3.6
MD100-24S	150-700	298 x 100	250	12	20	24	135	232	4.5
MD100-24DS	150-700	298 x 100	250	12	20	2 x 24	104	173	4.5
MD125HD-24DS	500-1500	367 x 127	308	16	25	2 x 24	134	219	6.3
MD125XHD-24DS	1000-2000	367 x 127	308	16	25	2 x 24	134	219	6.4

Metric Coarse bolt thread unless stated

# S TYPE - ADJUSTING STUD ENGINE AND MACHINERY



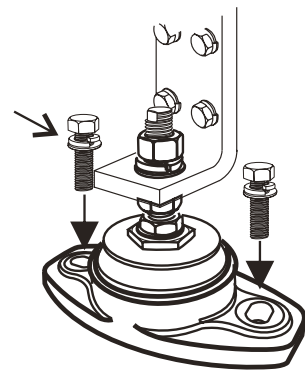
All metal components zinc plated to ASTM B633 SC3

Resilent Element	Hardness SDH-A
Yellow	50
Red	60
Black	70
Dark Blue	75
Green	80
Base Black	



Model: M110-24S

Base bolts not supplied



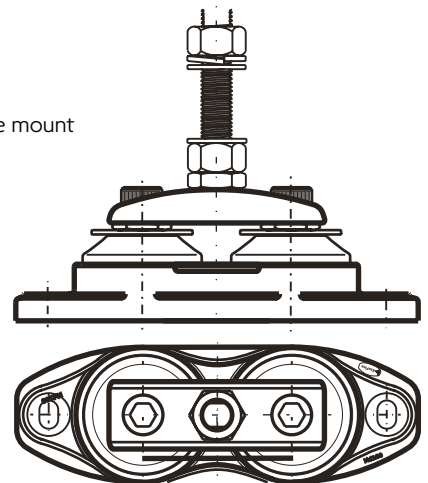
## Nomenclature for double mounts

Model: MD100-24S

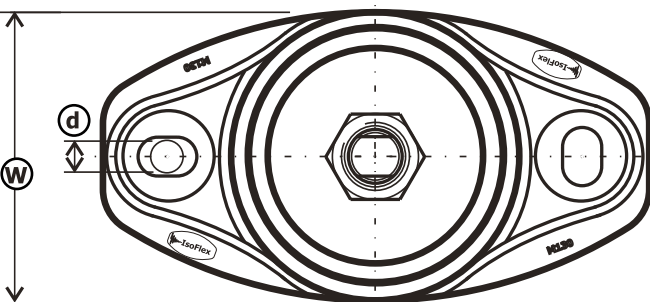
'D' denotes double core mount with 1 x adjusting stud.

Model: MD125-24DS

'DS' denotes 2 x adjusting studs.



Model: MD100-24S



Copyright © 2010 Isoflex Technologies Pty Ltd. Specifications are subject to change without notice.

# MAXImounts

# B TYPE - BOLT DOWN ENGINE AND MACHINERY

## Single and Double Core Mounts

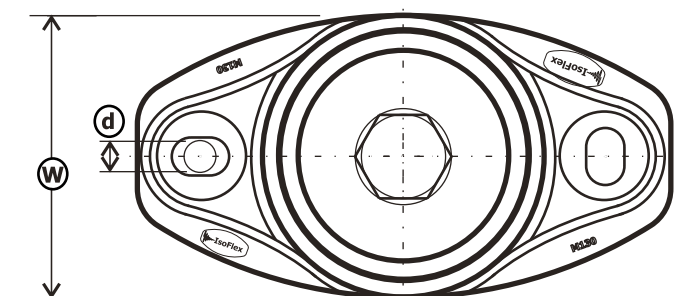
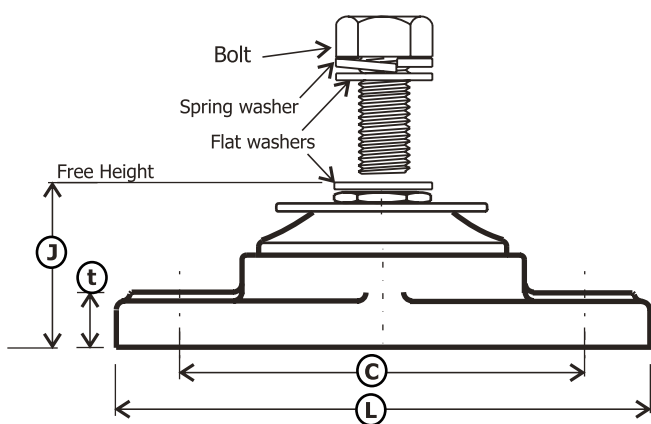
Metric								
MOUNT MODEL	RECOMMENDED WORKING LOAD PER MOUNT	BASE FOOTPRINT L X W	BASE BOLT CENTERS C	BASE BOLT DIA D	BASE THICKNESS T	BOLT DIA B	MIN FREE HEIGHT J	WEIGHT
	kg	mm	mm	mm	mm	mm	mm	kg
M30-10B	20-75	105 x 64	75-76.2	8	13	10	45	0.3
M30-12B	20-75	105 x 64	75-76.2	8	13	12	45	0.3
MY30-16B	25-100	220 x 74	174	10	20	16	76	1.0
M55-12B	25-200	134 x 75	100-105	10	18	12	60	0.6
M55-16B	25-200	134 x 75	100-105	10	18	16	60	0.6
M75-16B	75-300	177 x 98	127	12	20	16	59	1.1
M75-20B	75-300	177 x 98	127	12	20	20	59	1.2
M85-16B	75-300	190 x 98	140	12	20	16	59	1.1
M85-20B	75-300	190 x 98	140	12	20	20	59	1.2
M90-20B	75-350	177 x 100	127	12	20	20	75	1.3
M90-24B	75-350	177 x 100	127	12	20	24	75	1.4
M100-20B	75-350	188 x 100	140	12	20	20	75	1.3
M100-24B	75-350	188 x 100	140	12	20	24	75	1.4
M110-20B	75-350	220 x 106	170	12	25	20	90	1.7
M110-24B	75-350	220 x 106	170	12	25	24	90	1.8
M125HD-20B	250-750	240 x 127	170	16	25	20	95	2.0
M125HD-24B	250-750	240 x 127	170	16	25	24	95	2.0
M125XHD-24B	500-1200	240 x 127	170	16	25	24	95	2.0
M127HD-20B	250-750	240 x 127	182	16	25	20	95	2.2
M127HD-24B	250-750	240 x 127	182	16	25	24	95	2.2
M127XHD-24B	500-1200	240 x 127	182	16	25	24	95	2.2
M130HD-20B	250-750	240 x 127	182	16	25	20	75	2.2
M130HD-24B	250-750	240 x 127	182	16	25	24	75	2.2
M130XHD-24B	500-1200	240 x 127	182	16	25	24	75	2.2
M130LPHD-24B	250-750	240 x 127	182	16	25	24	70	2.2
M130LPXHD-24B	500-1200	240 x 127	182	16	25	24	70	2.2
M135HD-24B	600-1600	240 x 145	182	16	25	24	98	3.7
M140HD-24B	600-1600	240 x 145	182	16	25	24	75	3.5
MD100-24B	150-700	298 x 100	250	12	20	24	101	4.2
MD100-24DB	150-700	298 x 100	250	12	20	2 x 24	75	4
MD125HD-24DB	500-1500	367 x 127	308	16	25	2 x 24	95	13
MD125XHD-24DB	1000-2000	367 x 127	308	16	25	2 x 24	95	13

Metric Coarse bolt thread unless stated

# B TYPE - BOLT DOWN ENGINE MOUNTS

The bolt length required is dependent on the application, a standard length bolt is supplied. Allow a minimum of 1 x bolt dia & maximum of 1.5 x bolt dia into the mount.

2 x flat washers & 1 x spring washer supplied, ensure that they are fitted as shown.



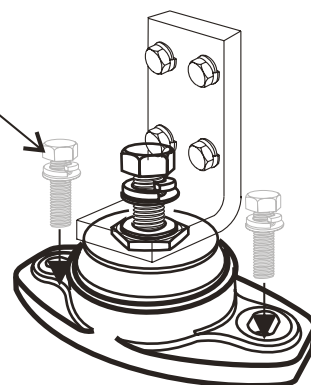
All metal components zinc plated to ASTM B633 SC3

Resilent Element	Hardness SDH-A
Yellow	50
Red	60
Black	70
Dark Blue	75
Green	80
Base Black	



Model: M85 - 16B

Base bolts not supplied



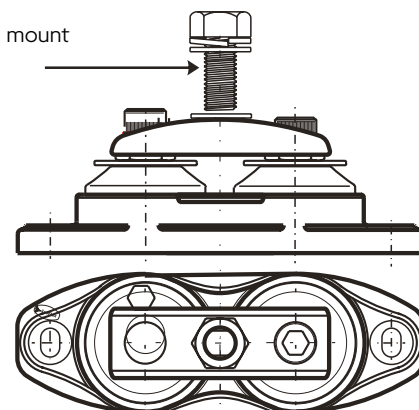
## Nomenclature for double mounts

Model: MD100-24B

'D' denotes double core mount with 1 x bolt.

Model: MD125-24DB

'D' denotes double core mount & 'DB' denotes 2 x bolts.



Model: MD100-24B

Copyright © 2010 Isoflex Technologies Pty Ltd. Specifications are subject to change without notice.

# MAXImounts